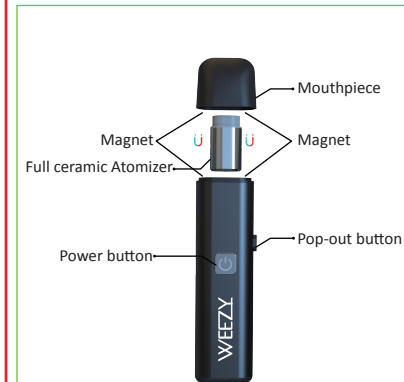


四折页说明书

55W*76L mm

Introduction



1

Installation

1. Fully charge the Weezy with included Micro USB Charger for 2 hours.
2. Gently pull the magnetic mouthpiece to remove it from the device.
3. Fill the ceramic atomizer with wax using the included packing tool(Do not overpack).
4. Put the mouthpiece back onto the device.

How to use

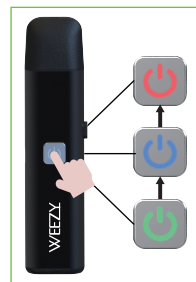
Power On/Off

Press the power button 5 times quickly to turn on/off. The indicator light will flash 5 times to indicate that your device is turning on/off.

Variable Voltage

The Weezy has 3 temperature settings: 3.3V (Green) / 3.7V (Blue) / 4.2V (Red). You can change voltage by pressing the power button 3 times quickly.

2



Dual Working Modes

Regular mode: Simply hold the power button and inhale to vape. The longer you inhale, the more vapor will be created.

Sesh mode: Press the button two times quickly to activate a 15-second continuous heating period. Then simply inhale to vape, without needing to hold the button down.

3

Threadless Pop-out Atomizer

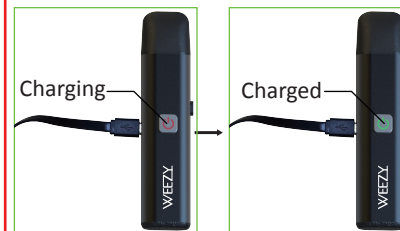
Your device's atomizer simply pops off when you need to remove it for cleaning or replacement. Remove the mouthpiece and press the pop-out button, which will allow you to easily remove the atomizer. To replace the atomizer, simply place it back on the device and press down. Caution: Do not touch the metal casing of the atomizer until it fully cools down after use.



4

Charging Instructions

A red light will turn on when your device is plugged into the charger. When it is fully charged, the light will turn green.



5

Cleaning

When using for an extended amount of time, the mouthpiece (especially the filter) and the atomizer may become clogged and dirty, which will make inhalation more difficult. We recommend cleaning with an alcohol swab. Do not push all the way down into the atomizer, as to not damage the device.

Warranty

Your purchase of the Weezy includes a lifetime warranty on all its parts. Each Weezy is hand tested in our US warehouse before shipping to ensure quality. Be sure to scratch and scan the QR code located on the box of this device to collect rewards and activate your warranty. This lifetime warranty applies to customers within the United States only. Please contact us directly at support@thekindpen.com if you are outside of the US.

6

Thank you for purchasing The Kind Pen. #be kind and take it EZ. #For more information, please visit www.thekindpen.com

@the_kindpen



User Manual

封底

封面